

SD TINY HOME Odin



“You can dream, create, design, and build the most wonderful place in the world.
But it requires people to make the dream a reality.”

– Walt Disney

About Odin Unit

State-of-the-art meets minimalism. The Odin unit is meticulously designed and features the latest in modern amenities and comfort at a fraction of the size and cost of traditional homes. Every detail is planned to maximize space and efficiency.

Built to last

Built from rigid steel, our homes are nearly incredibly strong and secure.

Weather proof

Strong enough to withstand wind, fire, snow, earthquakes, floods, and just about anything else you can throw at it.

Contact us for more information

Ben Kauffman

(619) 565 4909

ben@bigbensd.com

Over 30+ Years experience
Over 100+ homes built
Over 1000+ jobs completed

Honest

Transparent

Dependable





Odin Unit Features

General Info

192 Sqft

24ft x 8ft

Electrical System: 120amp

Plumbing System: PVC W/ Pex Piping

Structural Components

R-30 Fiberglass Insulating

Premium Biowood Flooring

Gypsum Board Walls and Ceiling

Interior Finishings

Ceiling Recessed LED Light System

Treated Sub-Floor

Vinyl Waterproof Wood Flooring

Full Kitchen

Double Bowl Sink and Pull-out Faucet

Free-Standing Electric Range

Large Granite Kitchen Countertop

Point Of Use Water Heater

Full Bathroom

Sink and Faucet

Granite Bathroom Floor & Wall Tile

Modular Shower Panel System

Energy Efficient Ergonomic Toilet

Bathroom Ceiling Built-In Fan

Point Of Use Water Heater

Doors & Windows

Secure Energy Efficient Doors

Energy Efficient Windows

Custom-Made Patio Sliding Door

ECO Friendly Materials
Waterproof Flooring
Energy Efficient



Odin ADU Cost

Our Odin unit comes complete and fully loaded with one simple price. It is all included without any hidden fees, price changes or extras. What you see is what you get. Honesty and trustworthiness is what we stand for..

All inclusive price includes

Turn Key Unit

Starting at just
\$79,000

THE VERY BEST
IN THE INDUSTRY

Daily updated with progress
Progress reports and payments
Invoice with running totals

Price is subject to inspection and accessibility to utilities and condition of placement of unit.

Odin Unit Garrely



Flawless Design
Modern & Clean
Usable space

Odin Unit

1 Bed
1 Bath
192 sqft

General Info

192 sqft

Electrical System:

Plumbing System: PVC W/ Pex Piping

Structural Components

2x4/ 2x2 Frame

R-30 Fiberglass Insulating

Premium Biowood Flooring

Gypsum Board Walls and Ceiling

Interior Finishings

Ceiling Recessed LED Light System

Treated Sub-Floor

Vinyl Waterproof Wood Flooring

Full Kitchen

Double Bowl Sink and Pull-out Faucet

Free-Standing Electric Range

Large Granite Kitchen Countertop

Point Of Use Water Heater

Full Bathroom

Sink and Faucet

Granite Bathroom Floor & Wall Tile

Modular Shower Panel System

Energy Efficient Ergonomic Toilet

Bathroom Ceiling Built-In Fan

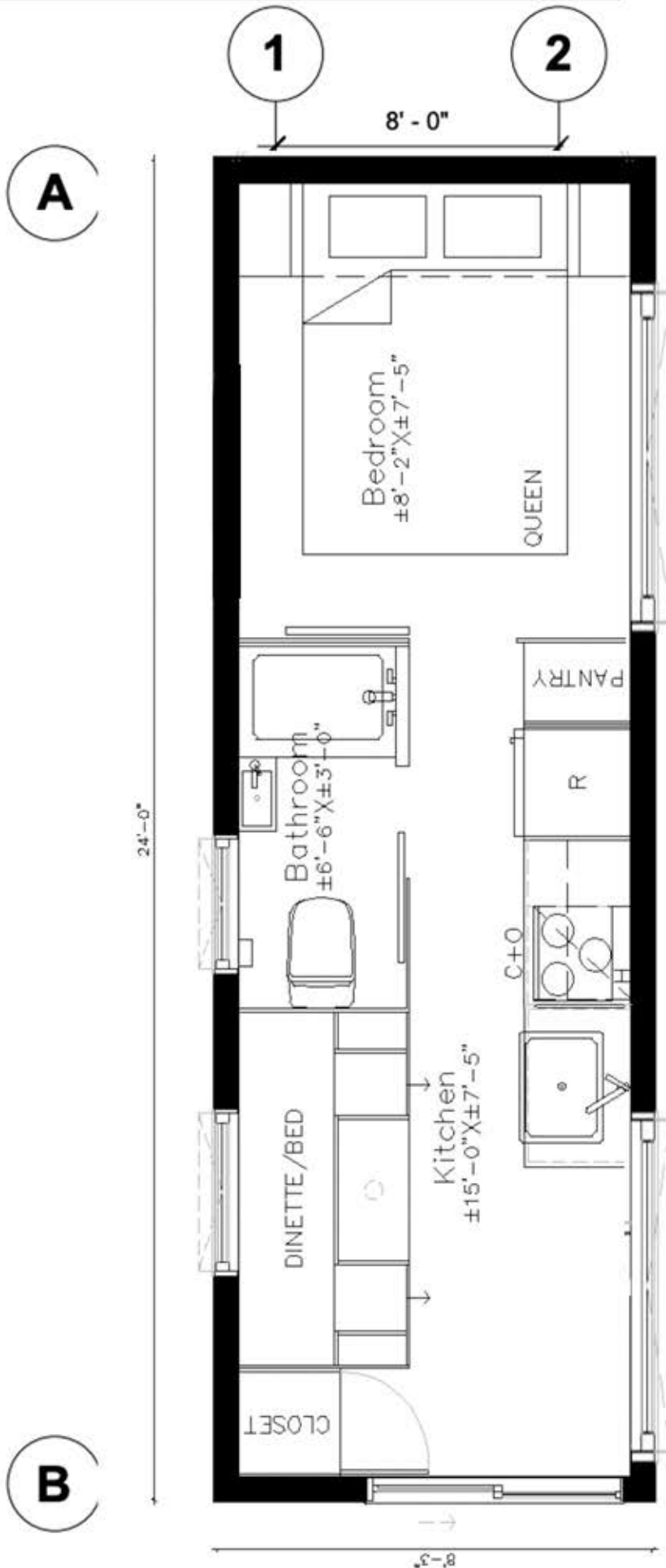
Point Of Use Water Heater

Doors & Windows

Secure Energy Efficient Doors

Energy Efficient Windows

Custom-Made Patio Sliding Door



All items shown are subject to change. Renderings and images are examples only, final product will differ from images.